

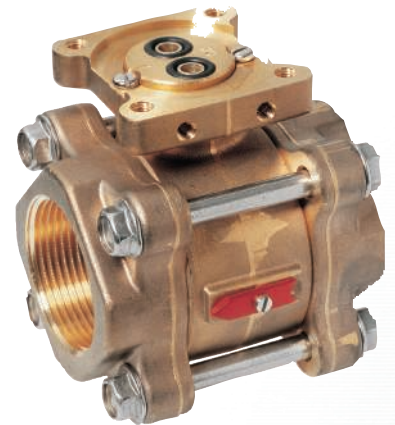
The A-series Eletta Flow Monitor

with local indication
and analog output



Eletta flow

when you want to know



GL series

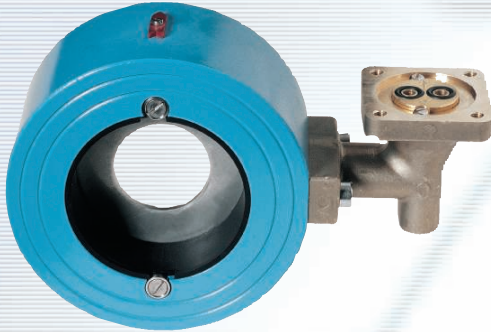
The Pipe Section is constructed of copper alloy and fitted with BSP/NPT threads from 15 mm to 40 mm (1/2"–1 1/2").

Benefits of the A-series

- Rugged and sturdy design
- Uses proven differential pressure technique
- Economical alternative to more expensive flow meters.
- Liquid and gases can be monitored
- Local alarm *and* indication of flow through 20 segments LED bar graph
- Remote alarms *and* remote reading of flow
- Measures 1:2 and 1: 5 flow range with +/- 5% F.S accuracy

Important applications and product features

- Monitoring flows in cooling and lubricating circuits
- Antifreeze protection of heat pump systems
- Dry out protection
- Starting and stopping pump motors
- Can measure both liquids and gases
- Low cost solution for difficult flow applications
- Interchangeable control units to fit all pipe sections
- Measurement not affected by static pressure



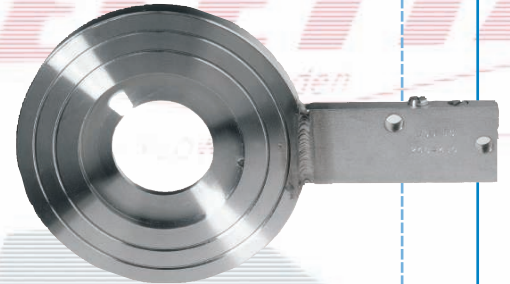
FA series

The Pipe Section has a flanged (wafer) process pipe connection and the material is bronze from 15 mm up to size 40 mm (1/2"–1 1/2") and epoxy polyester coated cast iron in sizes 50 mm to 400 mm (2"–16").



GSS series

The Pipe Section is made from Stainless Steel and comes with BSP/NPT threads in size 15, 20 and 25 mm (1/2", 3/4" and 1").



FSS series

The Pipe Section comes in stainless steel and has the same "fit between flanges" (wafer) execution as the -FA series and process connections from 15 mm to 500 mm (1/2"–20").

The A series Flow Monitor

The Eletta Flow Monitor's function is based on the proven and dependable differential pressure principle. This is perhaps the oldest and most widely used principle for flow metering, mainly because of its simplicity and its relatively low cost.

The A-series takes advantage of the Eletta proprietary robust and sturdy design. It combines the long proven mechanical function with an electronic circuit board, which gives a 4-20 mA linear output signal and a local indication from a 20 segments LED bar graph.

The A-series also has two integral adjustable alarm relays. Each of the adjustable relays can be adjusted to trip anywhere within the measuring range of the monitor for high/low alarm. The design gives a highly repeatable output signal that often excludes the need of more accurate flow meters. In all, this makes the A-series one of the most complete and versatile of our products.

The A-series comes in two measuring ratios designated **A2** and **A5**, which means that the A2 has a measuring span of 1:2 and the A5 has a span of 1:5.

Like all Eletta Flow Monitors the A-series can monitor both liquids and gases.

Modular design

All the Eletta Flow Monitors including the A-series can be fitted to any of the various Eletta Flow Monitor Pipe Sections to suit your application.

As the control unit is pre-calibrated before leaving our production facilities, you can change pipe sections to fit other dimensions and materials than originally ordered.

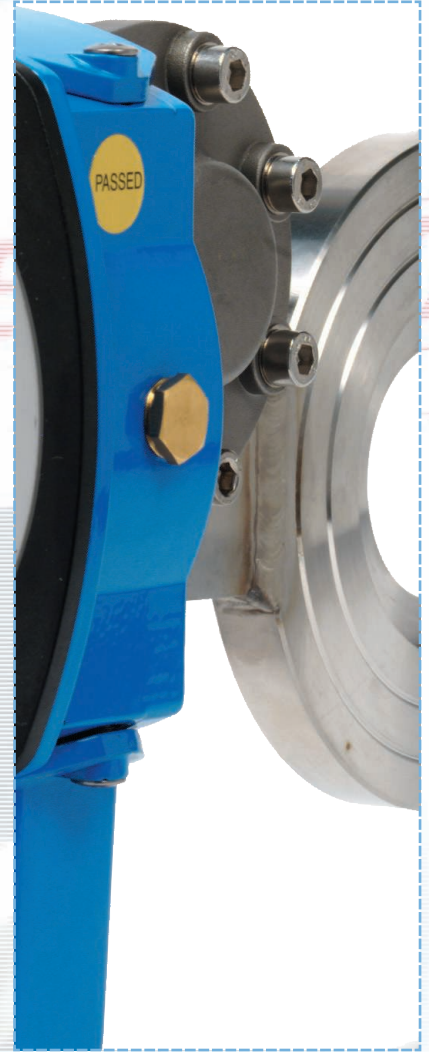
The Instrument consists of two parts mainly, i.e. the Pipe Section and the Control Unit. The Pipe Section is the part that is to be mounted in the process pipe and the Control Unit is mounted directly (standard) or remote to the Pipe Section.

The Control Unit contains the electrical circuit board which is giving you the Flow information through the analog outputs, 4 - 20 mA and the dual alarm relays.

The Pipe Sections come in Copper alloy, Stainless Steel, Cast Iron and sizes from DN 15/PN16 (ANSI 1/2"/150 lbs) up to DN 500/PN16 (ANSI 20"/150 lbs). The A-series Control Unit can also be used to upgrade an already installed Eletta Flow Monitor such as the S-, V- or R-series.

Specifications

Flow range:	0,4–25 000 l/min (liquid)
Wetted materials:	Copper alloy, epoxy painted cast iron. GSS: seaworthy stainless steel 904L, FSS: stainless steel, 316
Rubber parts:	Nitrile (HNBR), EPDM and Fluorinated rubber (FPM)
Max. pressure:	16 bar (232 PSI)
Standards:	PN 16/ANSI 150 lbs
Max temp. Control Unit:	65°C (150°F)
Max temp. Pipe Section:	-GL and -FA: 120°C (248°F) -GSS, -FSS: 250°C (482°F)
Enclosure:	IP65 (NEMA4)
Process Connection:	DN 15–40, BSP/NPT thread DN 15–500 DIN/ANSI flange (wafer)
Power supply:	24 VDC+/-10%
Relay contacts:	Max. <50 V AC/DC Min. 0,1VDC, 10 mA Max switching power: 1750 VA, 210 W
Outputs:	Isolated analog current 4–20 mA, 1000 ohm, zero-based
Recommended cable:	Shielded twisted pair min. 0,2 mm ² (0,0031 inch ²)
Accuracy:	< +/-5% F.S
Repeatability:	< 2% actual
Current consumption:	max 100 mA
CE-approvals:	The Eletta Flow Monitors conforms with the EU directive for low voltage no: 72/23/EEC (EN 60 204-1, Part 1.) and Electromagnetic compatibility according to the directive 89/336/EEC (EN 50081-1 and 50082-2) Complies with applicable parts in PE-Directive 97/23/EG



Eletta Flow Monitors

The name Eletta has become synonymous with flow monitoring in many industries world wide where the Products are appreciated for their sturdy and robust design.

Eletta Flow Monitors are of our own proprietary design and our manufacturing as well as the whole company is certified to ISO 9001 and ISO 14000 quality standards.

We export our Products all over the world and we have Authorized Distributors in most European countries, Australia, South Africa, India, Japan and USA.

Find out more

In our technical leaflets and manuals you will find full details of the design, pressure drop graphs, measuring ranges and dimensional drawings. We welcome you to our at all time updated web site at www.eletta.com for the most recent and accurate information about Eletta and our Products. At this site you can find most of the documentation on down-loadable files. Whatever your request for information is, our e-mail address:

info@eletta.com is the fastest way to get in contact with our Customer Support and technical department. Of course, your local Eletta Distributor, whose address you can find in our homepage, can assist you in most cases.